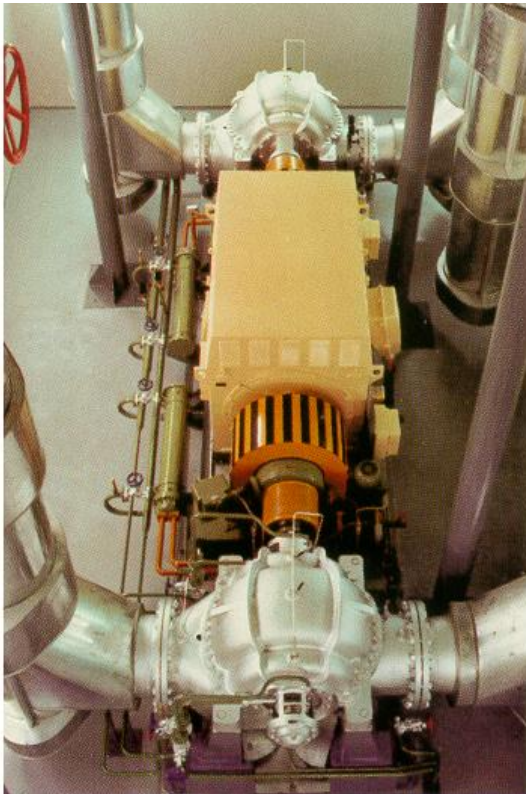


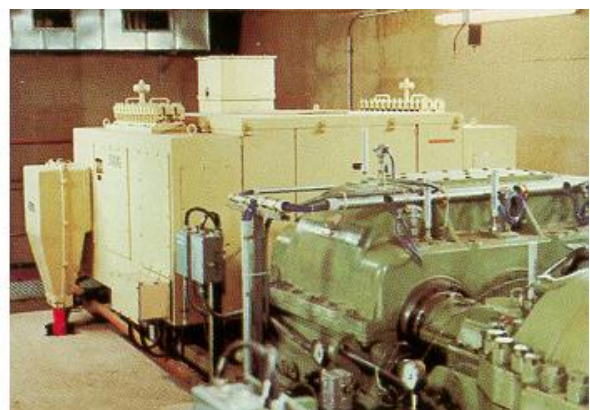
## Primjeri primjene trofaznih asinkronih motora

1. U pogonu pumpi za kotlovsku vodu u energani, snage 17,5 MW

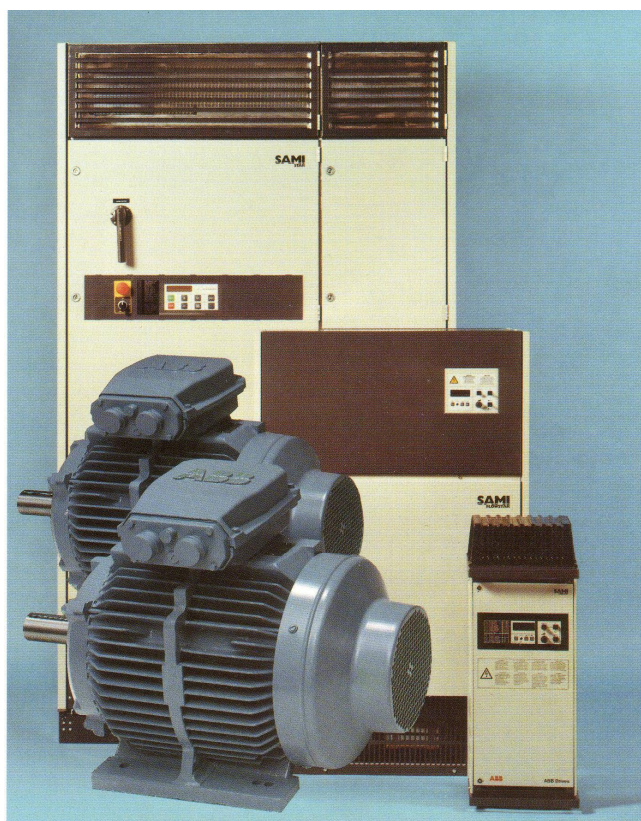


2. Istovremeni pogon dviju pumpi

3. U pogonu kompresora



#### 4. Motori s odvojenim frekvencijsko-naponskim pretvaračem



#### 5. Motori s prigradenim frekvencijsko-naponskim pretvaračem

